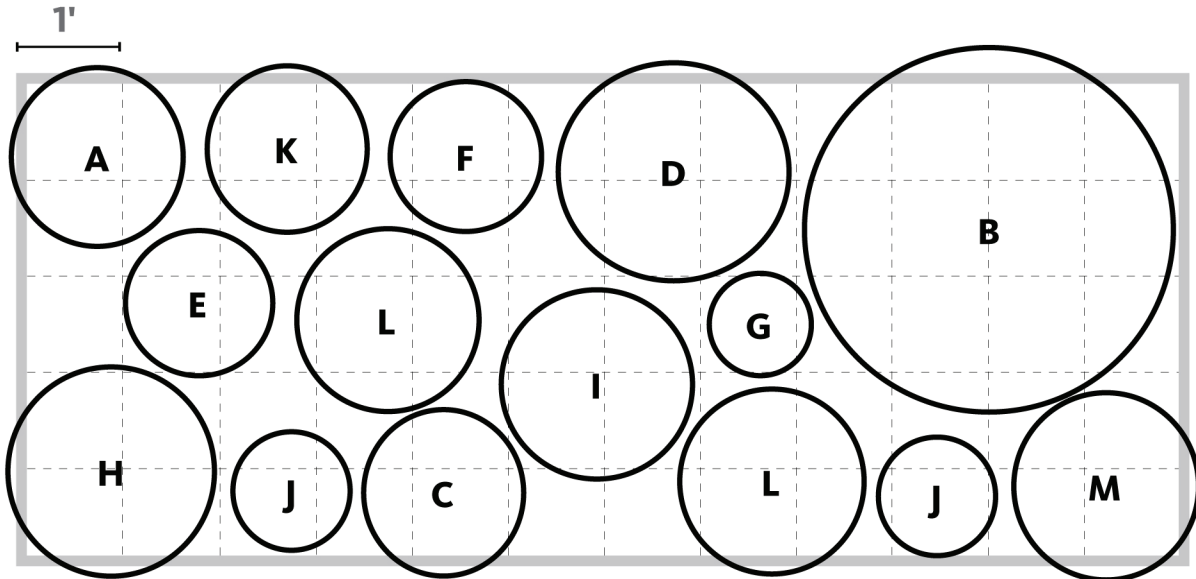


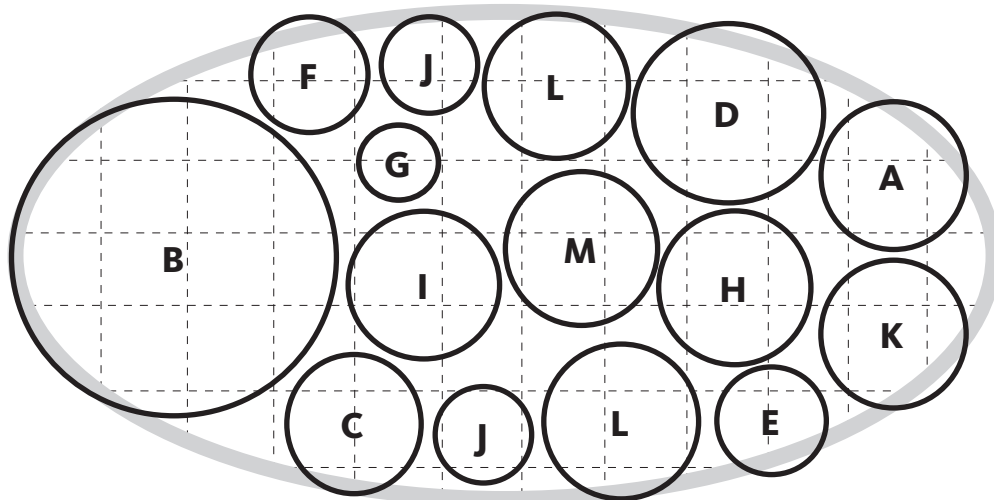
Pollinator Garden

5'x12' | 13 VARIETIES | 15 PLANTS



- | | |
|--------------------------------------------------|------------------------------------------------|
| A Anemone Robustissima - ANRO (1) | H Stachys Hummelo - STHU (1) |
| B Baptisia Purple Smoke - BAPS (1) | I Asclepias Tuberosa - ASTU (1) |
| C Saponaria Ocyroides - SAOC (1) | J Calamintha Nepeta - CANE (2) |
| D Perovskia Atriplicifolia - PEAT (1) | K Gaura Whirling Butterflies - GAWB (1) |
| E Phlox Red Riding Hood - PHRR (1) | L Prunella Freeland Blue - PRFB (2) |
| F Rudbeckia Fulgida - RUFF (1) | M Helianthus Table Mountain - HETM (1) |
| G Agastache Raspberry Daiquiri - AGRD (1) | |

ISLAND LAYOUT | 6'x12'



Questions? Call us at 800-852-5243.